

220-240 V AC 50-60 Hz mains powered smoke alarm. 9V battery back-up.

WARNING: Wiring should be installed by a qualified electrician in accordance with local building standards. The wiring must conform to current regulations for electrical installations. Check with local building and fire regulations for your property, to ensure compliance.

Optical smoke alarms are suitable for detecting slow smouldering fires. Like other smoke alarms, they can be subject to nuisance alarms from steam and should not be placed near bathrooms.

For the earliest warning, we recommend smoke alarms be fitted in all rooms where the temperature is between 0°C (32°F) and 40°C (104°F). Prolonged exposure to temperatures outside those stated above will reduce product life.

This smoke alarm is not intended for any non-residential, commercial or industrial application, nor for any other purpose than described above.

Technical Support

Online: www.fireangel.co.uk/support

E-mail: technicalsupport@fireangel.co.uk

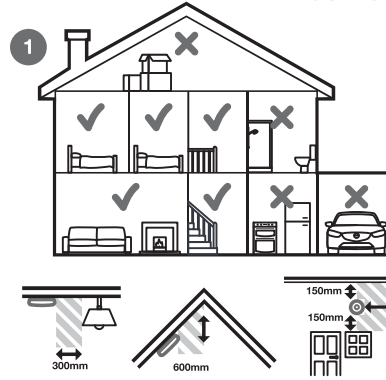
Phone: 0800 141 2561

Note: This user manual is also available in large text and other formats. Please email: technicalsupport@sprue.com or call 0800 141 2561 for further information.

© Sprue Safety Products Ltd,
Vanguard Centre, Coventry CV4 7EZ,
United Kingdom,
www.sprue.com

GN5037FS

1. POSITIONING



Your smoke alarm is suitable for the landing, hallway, bedroom, living room and dining room

Smoke alarms should be sited at least 300mm from light fittings and walls. Ideally as central as possible in the room.

If there is fluorescent lighting, smoke alarms should be installed at least 1500mm from these fittings and wiring. Keep any wiring at least 1000mm from fluorescent lighting. Do not use circuits containing fluorescent light fittings or dimmer switches.

Smoke alarms should be positioned at no more than 600mm vertically below the highest point in the room.

If positioning your smoke alarm on the wall, the top of the alarm must be between 150mm and 300mm below the ceiling, and at least 300mm from a neighbouring wall.

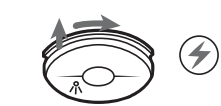
Locations of alarms must be compliant with either BS 5839: Part 6 or relevant Building Regulations if in any doubt.

2. INSTALLATION

2a Unwrap battery. Insert battery into battery compartment (match '+' to '+'). Remove dust cover. Press and hold the test / 🔊 button for 5 seconds. The alarm will sound.



2c Push and twist the alarm clockwise onto the base plate. Turn the electricity supply back on and check that the green LED is on.

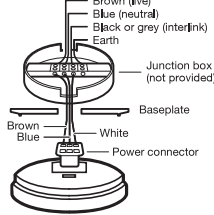


2b Switch off electricity supply.

Remove the baseplate by twisting the alarm anti-clockwise. Connect the house wiring to the power connector provided. Ensure a permanent connection is made in a suitable junction box (not provided).

No connection should be made to the mains electricity supply earth terminal. Terminate house wiring earth in spare earth connector.

Fit the base to ceiling using the screws provided. Feed the wiring through the hole in the base plate and connect the power adaptor to the alarm.

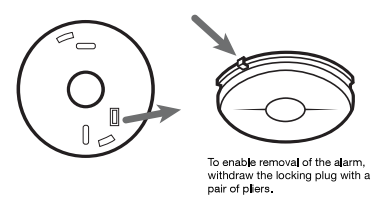


2d Press and hold the test / 🔊 button for 5 seconds. The alarm will sound.



OPTIONAL LOCKING FEATURE

2e Remove locking plug from baseplate. Insert into hole between base plate and alarm



To enable removal of the alarm, withdraw the locking plug with a pair of pliers.

IMPORTANT: The circuit used to Power the alarm must be a 24 hour voltage circuit that cannot be turned off by a switch. In accordance with BS 5839: Part 6, we recommend: For mains powered alarms, each with an integral standby supply, the mains electricity supply should take the form of either a) an independent circuit at the dwelling's main circuit board, in which case no other electrical equipment should be connected to this circuit (other than a dedicated monitoring device installed to indicate failure of the mains electricity supply to the alarms); or b) a separately electrically protected, regularly used local lighting circuit. Check with local building and fire regulations for your property, to ensure compliance.

Ensure dust cover is removed before operation. The red LED on the front of the alarm should flash once every 32 seconds (approx.) to show that the alarm sensor is in actively monitoring for smoke. When the test button is pressed, the alarm will flash once every 8 seconds for 8 minutes.

If desired, the alarm can be interconnected with up to 11 other smoke, heat or carbon monoxide alarms from the FireAngel range via the 'I' connector. (See Optional Interconnecting Feature).

3. SILENCE FEATURE

In a known false alarm, the alarm can be silenced temporarily.

3a Press and hold the test / 🔊 button for 5 seconds.



3b The alarm will silence for 8 minutes.



Smoke alarms can react to cooking fumes or other non emergency situations. Your alarm features 'Silence' technology. In the event of a known false alarm you can temporarily silence it by pressing the test / 🔊 button. After 8 minutes your alarm will automatically return to full sensitivity.

The red LED on the front of the alarm will flash once every 8 seconds to show that it is in Silence mode.

The alarm will sound continuously and the red LED will flash every second when the alarm senses smoke. **NEVER IGNORE ANY ALARM.** If an alarm is sounding, it is warning you of a potentially hazardous situation. Do not ignore it. Ignoring the alarm may result in injury or death. If your smoke alarm activates and you are not absolutely certain of the source of smoke, get everyone out of the house immediately.

4. OPTIONAL INTERCONNECTING FEATURE

Up to 12 FireAngel mains smoke, heat or carbon monoxide alarms can be interconnected on a single network.

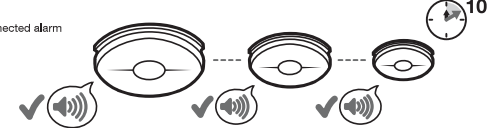
4a For multiple alarm installations use a 'three core and earth' style cable between all the alarms to be interconnected. Connect the 3rd core of the cable ('Interconnect' cable), to the white wire from the smoke alarm's power connector (see Installation).

WIRING KEY

— = Earth
— = Interconnect
— = Neutral
— = Live



4b Test each alarm and ensure every connected alarm sounds within 10 seconds.



On an interconnected network, only the alarm that senses the fire will sound and flash its LED. Other connected alarms will sound a warning but will not flash their LED. Do not connect more than 11 other devices.

IMPORTANT: The interconnect wire (minimum 0.75 mm² cable) must be treated as Live, it should be insulated and sheathed.

5. MAINTENANCE

5a Test the alarm every month. Press the test / 🔊 button for 5 seconds. The alarm will sound.



5b Vacuum your alarm every 3 months.



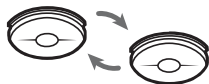
5c Do not use cleaners or solvents.



5d Do not paint the alarm.



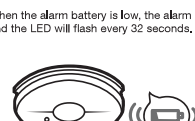
5e Replace the alarm every 10 years.



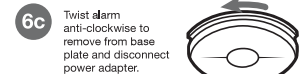
Do not use any other test method except the process described in this manual.

6. LOW BATTERY WARNING

6a When the alarm battery is low, the alarm will 'chirp' and the LED will flash every 32 seconds.



6b Switch off electricity supply.



6c Twist alarm anti-clockwise to remove from base plate and disconnect power adapter.

6d Replace the batteries and re-install. (See 'Installation')



6e Always test the alarm after replacing the batteries.



Your alarm requires 1 x 9V (PP3) battery. Under normal use, the battery should last approximately one year. Use of a battery other than those recommended here may have a detrimental effect on the alarm performance: Duracell MN1604, Gold Peak: GP1604S, GP1604A, Raymax: 6F22, 6LR61.

TROUBLESHOOTING GUIDE

If the green LED does not light when the alarm is connected to power:	<ul style="list-style-type: none"> Check that your smoke alarm is connected to the power supply and that the battery is correctly installed.
If your smoke alarm does not sound during testing:	<ul style="list-style-type: none"> Check that your alarm is connected to the power supply and that the battery is installed correctly. If testing after installation, allow a few seconds for the alarm to settle. Push and hold the centre of the test / 🔊 button firmly for 5 seconds. Check that the alarm is properly connected to the mains power.
If your smoke alarm activates when no smoke is visible:	<ul style="list-style-type: none"> Check the location of your smoke alarm. Clean the smoke alarm.
If your smoke alarm sounds unusual or 'chirps' intermittently:	<ul style="list-style-type: none"> Check the location of your smoke alarm. Check that your smoke alarm is definitely the source of the chirping; make sure the noise isn't coming from another alarm. If the alarm 'chirps' every 32 seconds and the red LED flashes at the same time - replace the battery. If the alarm 'chirps' every 32 seconds without a red LED flash, a fault is indicated - contact Technical Support.
If you experience frequent unwanted alarms:	<ul style="list-style-type: none"> Check the location of your smoke alarm. Clean the smoke alarm.

WARRANTY AND DISPOSAL

Sprue Safety Products Ltd warrants to the original purchaser that its enclosed smoke alarm be free from defects in materials and workmanship under normal residential use and service for a period of 5 (five) years from the date of purchase (not including the replaceable battery). Provided product is sent back to Sprue Safety Products with proof and date of purchase, Sprue Safety Products Ltd hereby warrants that during the 5 (five) year period commencing from the date of purchase Sprue Safety Products Ltd, at its discretion, agrees to replace the unit free of charge. The warranty on any replacement SW1 alarm, will last for the remainder of the period of the original warranty in respect of the alarm originally purchased - that is from the date of original purchase and not from the date of receipt of the replacement product. Sprue Safety Products Ltd reserves the right to offer an alternative product similar to that being replaced if the original model is no longer available or in stock. This warranty applies to the original retail purchaser from the date of original retail purchase and is not transferable. Proof of purchase is required. This warranty does not cover damage resulting from accident, misuse, disassembly, abuse or lack of reasonable care of the product, or applications not in accordance with the user manual. It does not cover events and conditions outside of Sprue Safety Products Ltd's control, such as Acts of God (fire, severe weather etc.). It does not apply to retail stores, service centres or any distributors or agents. Sprue Safety Products Ltd will not recognise any changes to this warranty by third parties.

Sprue Safety Products Ltd shall not be liable for any incidental or consequential damages caused by the breach of any expressed or implied warranty. Except to the extent prohibited by applicable law, any implied warranty of merchantability or fitness for a particular purpose is limited in duration for 5 (five) years.

This warranty does not affect your statutory rights. Except for death or personal injury, Sprue Safety Products Ltd shall not be liable for any loss of use, damage, cost or expense relating to this product or for any indirect, or consequential loss, damages or costs incurred by you or any other user of this product.

DISPOSAL

Waste electrical products should not be disposed of with your other household waste. The alarm is ideally suited for disposal within the waste electronic and electrical equipment (WEEE) recycling scheme. Please recycle where facilities exist. Check with your local authority, retailer or contact our Technical Support team for recycling/disposal advice as regional variations apply.

Once the batteries are removed, the low battery warning chirp will stop. The batteries should always be removed before disposal. Do not attempt to open, Do not burn.